



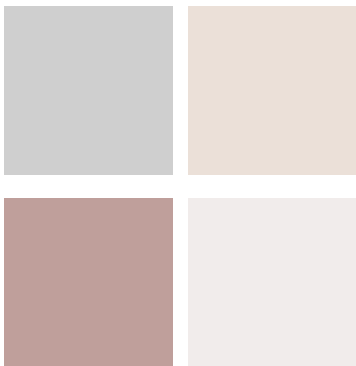
PARTY SUPPLIERS
& RENTALS INC

Seaside Graces

Balance of natural light and warm undertones, weaves its way through the rustic seaside details with shifting hues of silky satin and smoky gray, for a truly weathered costal feel.



Blush | Sage | Natural | Amaranth



Design/Planning: Knot Too Shabby Events | Photography: Erin L. Taylor Photography | Florals: Fiore Design House | Venue: Carolina Yacht Club

1. X-Back Farm Chair | 2. Pure Glassware | 3. Sultry Beige Satin Linen | 4. Heirloom Charcoal China | 5. Velo Gray & Gold Flatware | 6. Farm Table